

Downtown Crossing Phase 2 Construction Preview February 2019



City of New Haven
Mayor Toni N. Harp

Downtown Crossing

The City is transforming Route 34 from an expressway into a system of urban boulevards, reestablishing a bike and pedestrian friendly urban street grid, and creating opportunities for new development on over 10 acres of land.



Phase 2

Downtown Crossing

The City is transforming Route 34 from an expressway into a system of urban boulevards, reestablishing a bike and pedestrian friendly urban street grid, and creating opportunities for new development on over 10 acres of land.

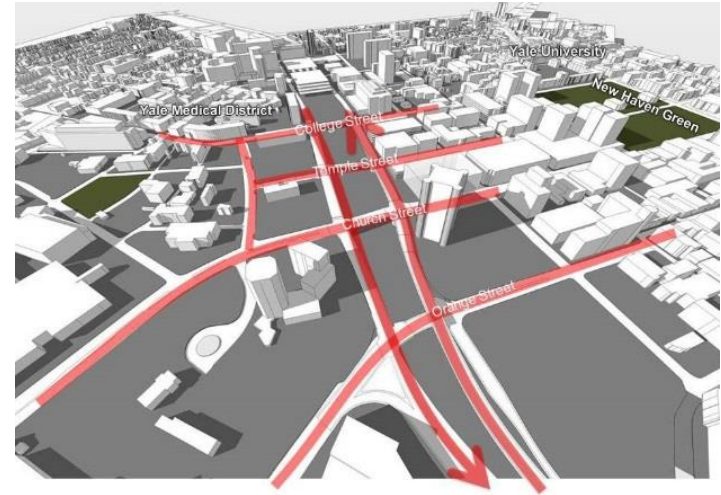


Phase 3

Downtown Crossing Goals



Quality of Life



Connectivity



Economic Development



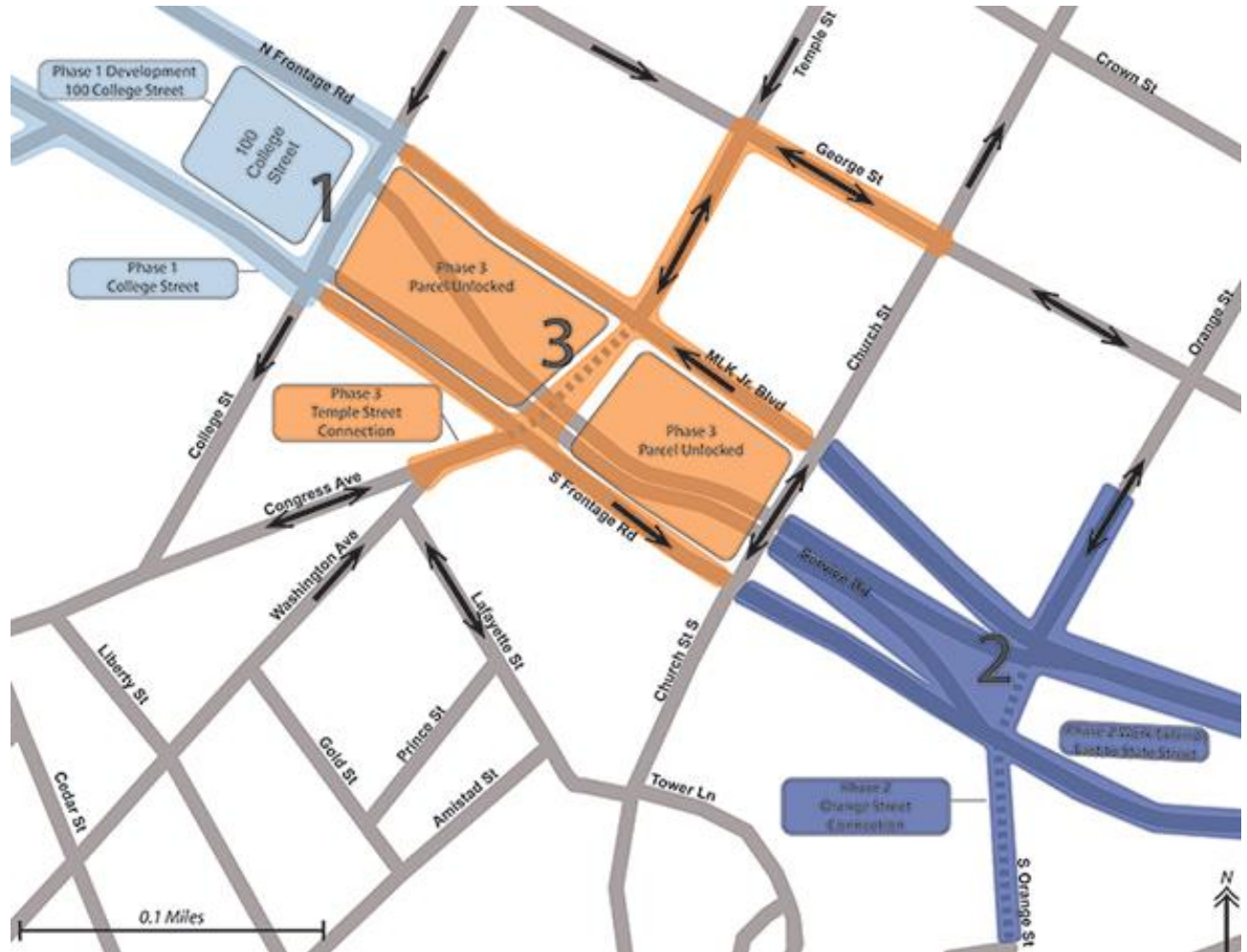
Environmental Sustainability

Downtown Crossing

Phase 1: College Street.
Completed in 2016.

Phase 2: Orange Street
reconnected to South
Orange Street.
Construction to begin in
Spring 2019.

Phase 3: Temple Street
extended to Congress
Avenue. Construction to
begin in late 2020.



Phase 1

Reconnecting New Haven: Expressway to Urban Boulevards

- Completed in 2016
- Converted the expressway to urban boulevards
- 2.4 acres of land became accessible
- 100 College Street was constructed through private investment



Downtown Crossing Phase 2

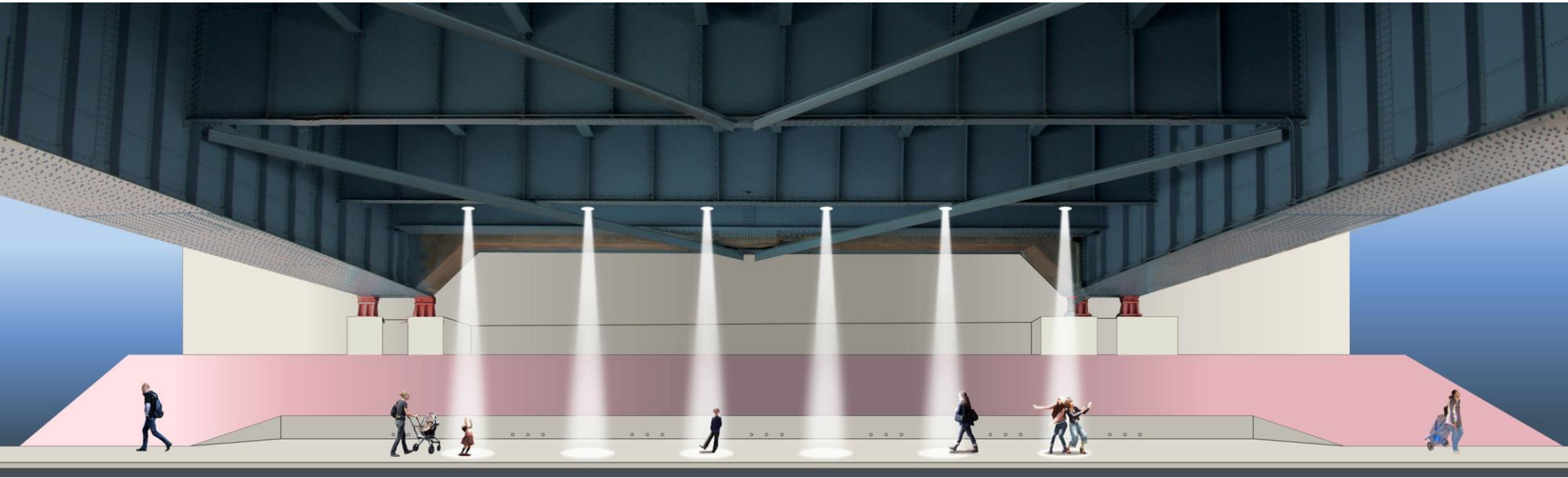
Orange Street Reconnected to South Orange Street

- In Phase 2, Orange Street will reconnect to South Orange Street with an at-grade intersection across the Route 34 corridor (MLK Boulevard, South Frontage Road, and the Air Rights Garage Service Drives).



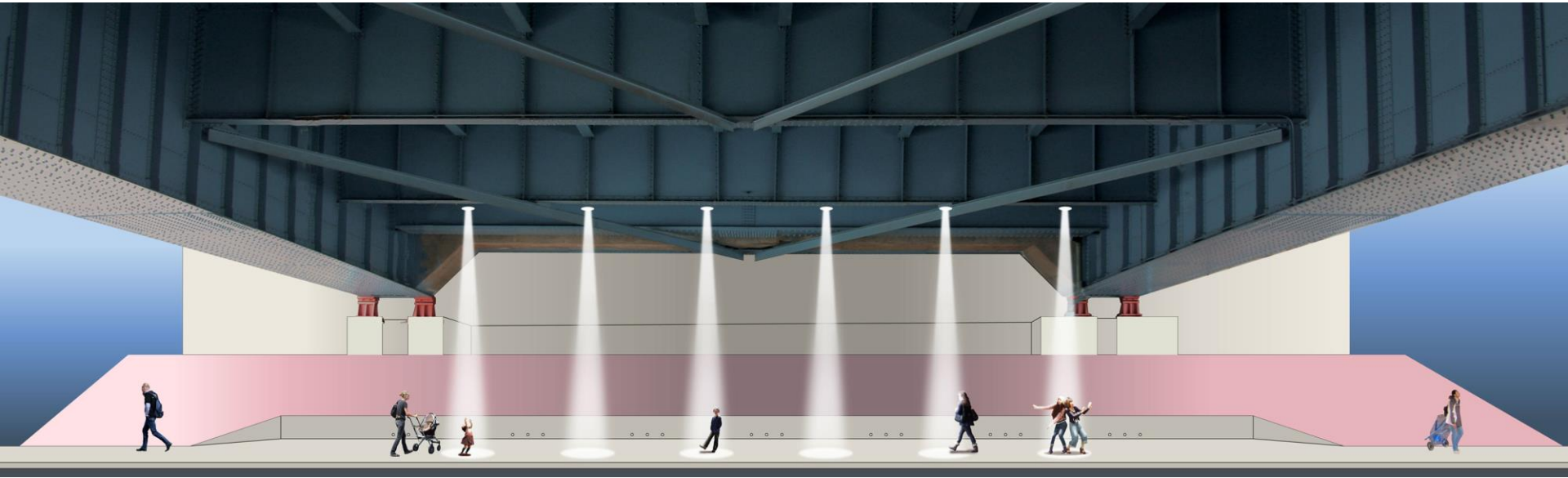
Phase 2 Highlights

- Green infrastructure
- Improved pedestrian connections between Downtown & Union Station
- Public art installation
- Bicycle and pedestrian improvements



Phase 2 Highlights

- Green infrastructure
- Improved pedestrian connections between Downtown & Union Station
- Public art installation
- Bicycle and pedestrian improvements



Downtown Crossing Phase 2

Streetscape Improvements

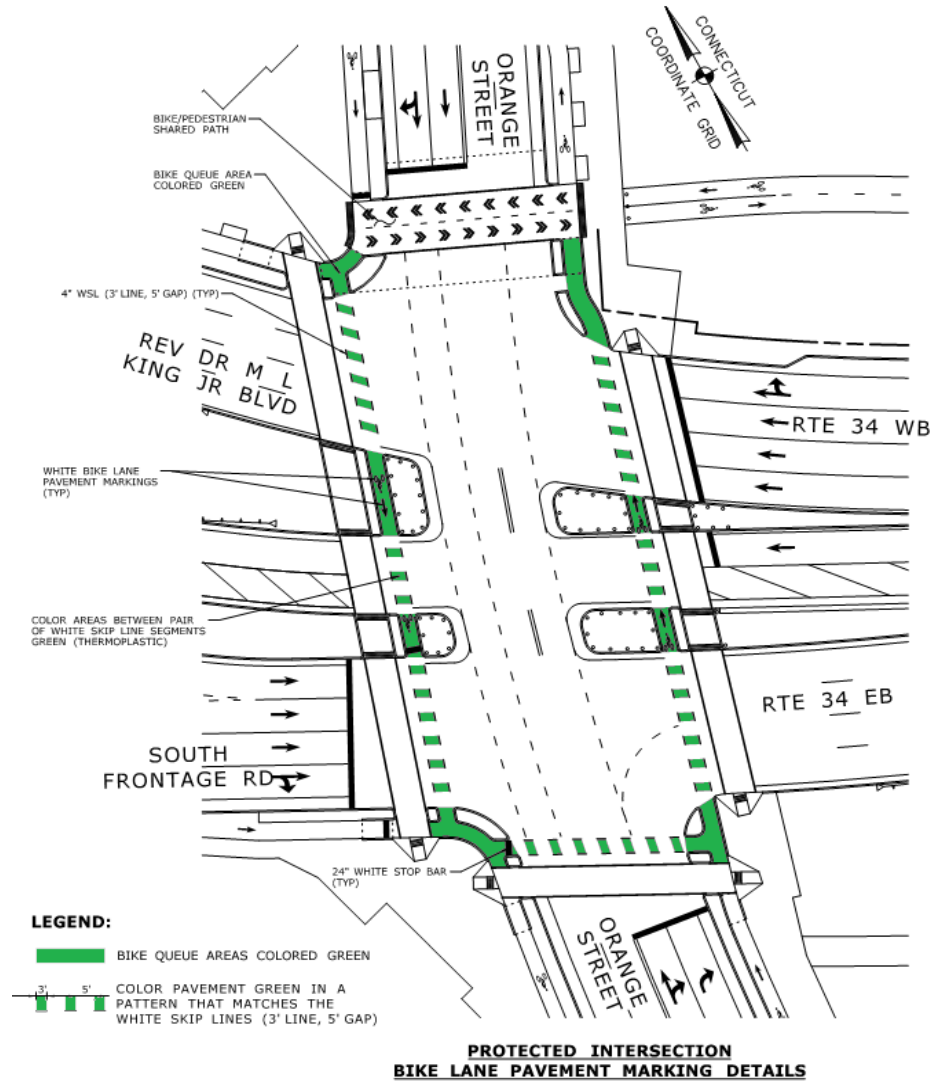
- At-grade intersections will create a welcoming entry point to the City – including place-making features and other beautification measures
- Bicycle and pedestrian improvements.
- Bioswales and other stormwater management and resiliency measures.
- Place-making features, public space, and other beautification measures to create a welcoming entry point to the city.



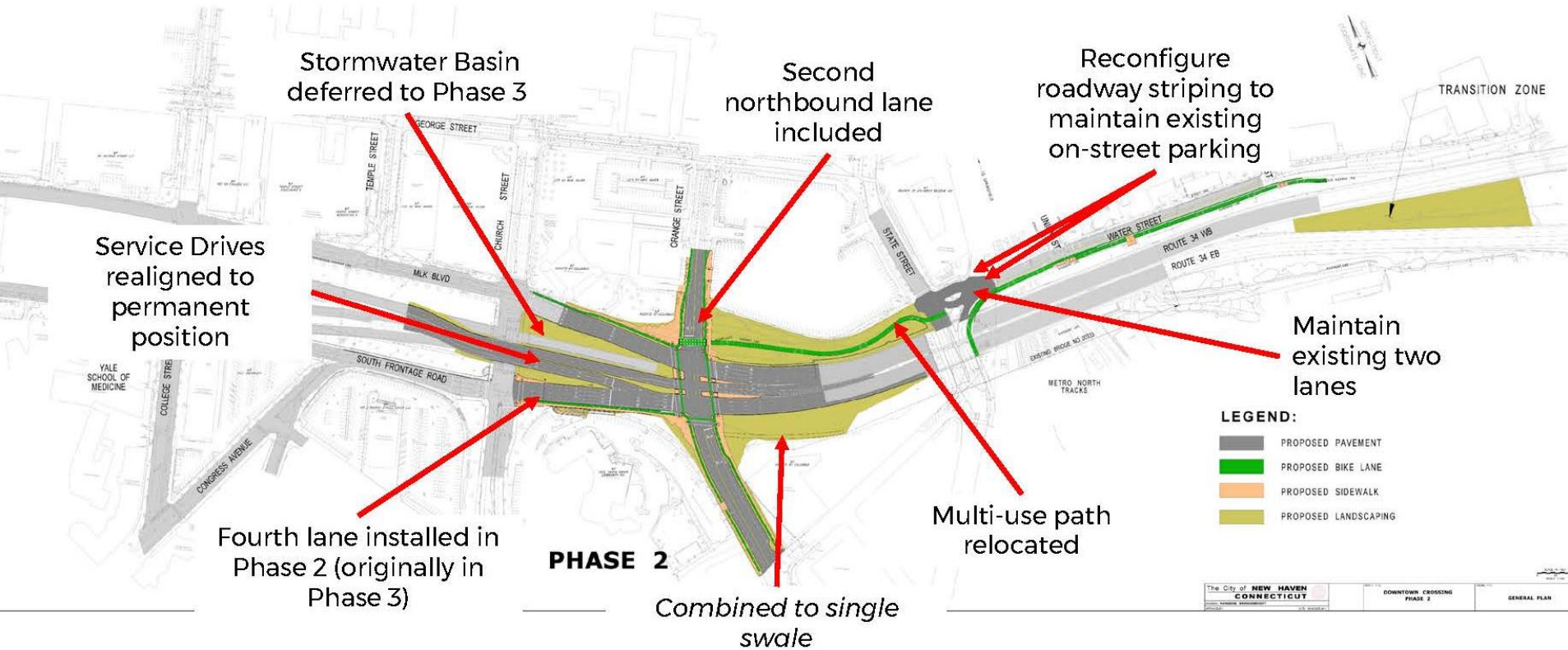
Downtown Crossing Phase 2

Bicycle and Pedestrian Improvements

- First protected bicycle intersection in Connecticut.
 - Four pedestrian refuges will be created at each corner of the intersection, with mid-block medians to serve as a refuge areas for the north-south crossing.
- Connection to East Coast Greenway.
- Generous sidewalks and bike lanes.



Phase 2 Design Changes



Downtown Crossing – Phase 2



Phase 3

Reconnecting New Haven – Two-Way Streets



Challenges:

- Utilities
- Elevation
- Drainage

Downtown Crossing

Completed Project with Developments





YALE UNIVERSITY CAMPUS

NEW HAVEN GREEN

YALE MEDICAL CAMPUS

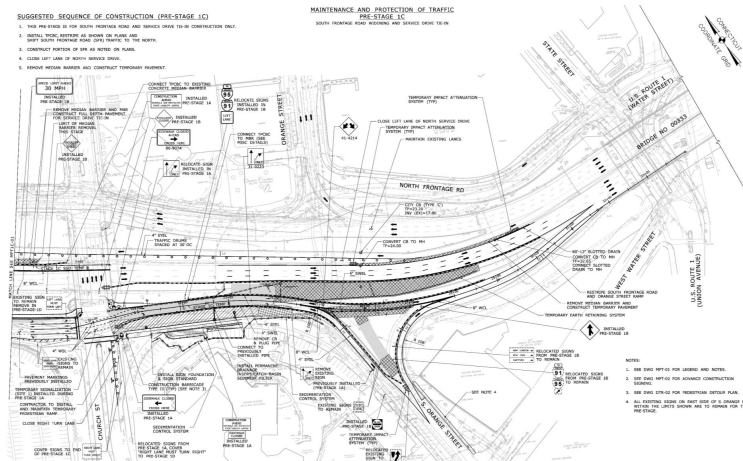
DOWNTOWN CROSSING

HILL-TO-DOWNTOWN

UNION STATION

Spring Outreach Plan

- Outreach on construction staging and plans for maintenance and protection of traffic
 - Media
 - Police and emergency services
 - Abutting properties
 - Community management teams
 - Other key stakeholders



Project Implementation and Timeline

Funding



City of **New Haven**
C O N N E C T I C U T



Timeline

- Phase 2: Construction to begin Spring 2019
- Phase 2: Construction complete Winter 2021
- Phase 3: Construction to begin December 2020
- Phase 3: Construction complete late 2022

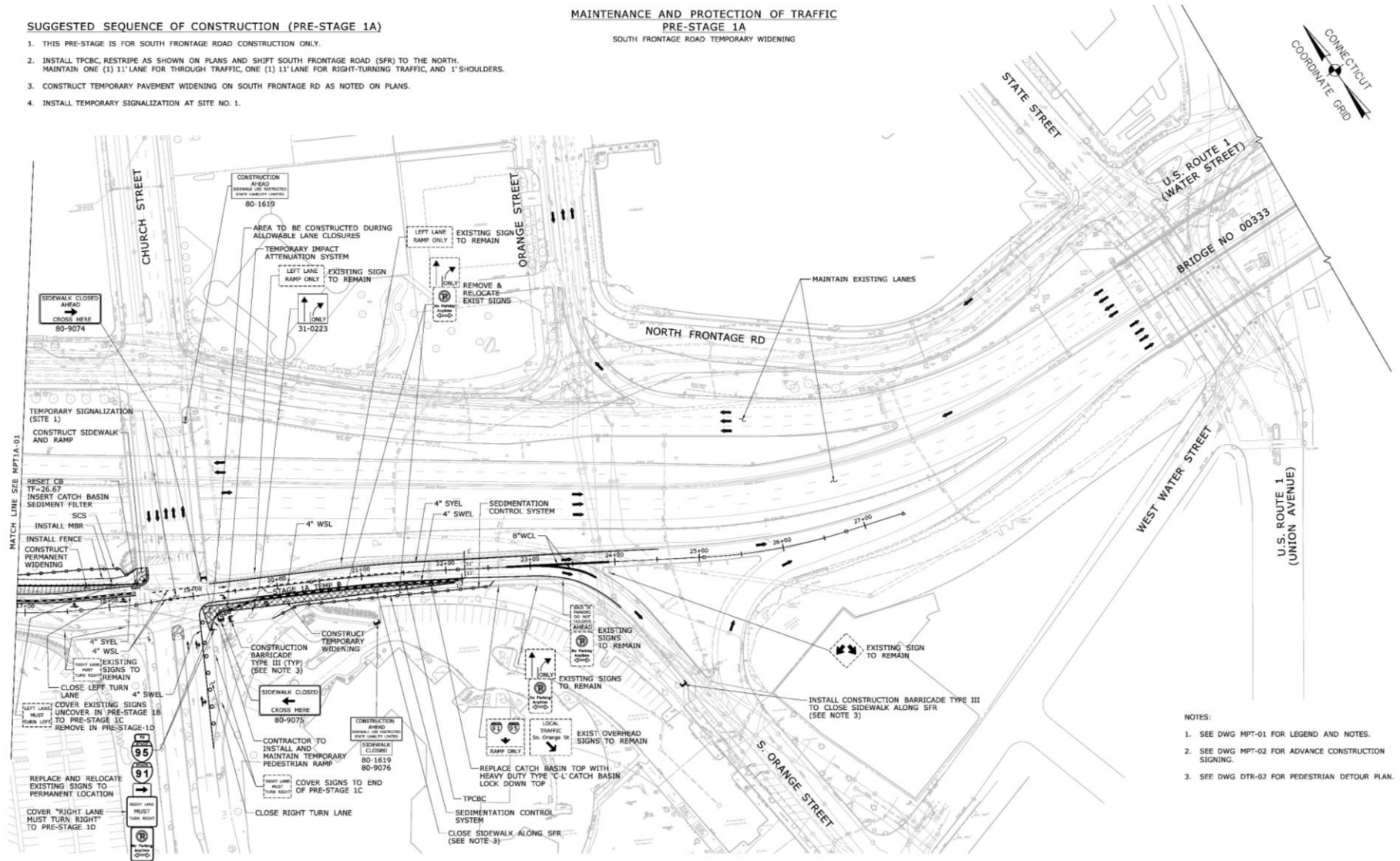
Construction Staging – Pre-Stage 1A

Duration: Approximately 6 weeks

SUGGESTED SEQUENCE OF CONSTRUCTION (PRE-STAGE 1A)

1. THIS PRE-STAGE IS FOR SOUTH FRONTAGE ROAD CONSTRUCTION ONLY.
2. INSTALL TPBCB, RESTRIPE AS SHOWN ON PLANS AND SHFT SOUTH FRONTAGE ROAD (SFR) TO THE NORTH. MAINTAIN ONE (1) 11' LANE FOR THROUGH TRAFFIC, ONE (1) 11' LANE FOR RIGHT-TURNING TRAFFIC, AND 1' SHOULDERS.
3. CONSTRUCT TEMPORARY PAVEMENT WIDENING ON SOUTH FRONTAGE RD AS NOTED ON PLANS.
4. INSTALL TEMPORARY SIGNALIZATION AT SITE NO. 1.

MAINTENANCE AND PROTECTION OF TRAFFIC PRE-STAGE 1A SOUTH FRONTAGE ROAD TEMPORARY WIDENING



- NOTES:
1. SEE DWG MPT-01 FOR LEGEND AND NOTES.
 2. SEE DWG MPT-02 FOR ADVANCE CONSTRUCTION SIGNING.
 3. SEE DWG DTR-02 FOR PEDESTRIAN DETOUR PLAN.

Construction Staging – Pre-Stage 1B

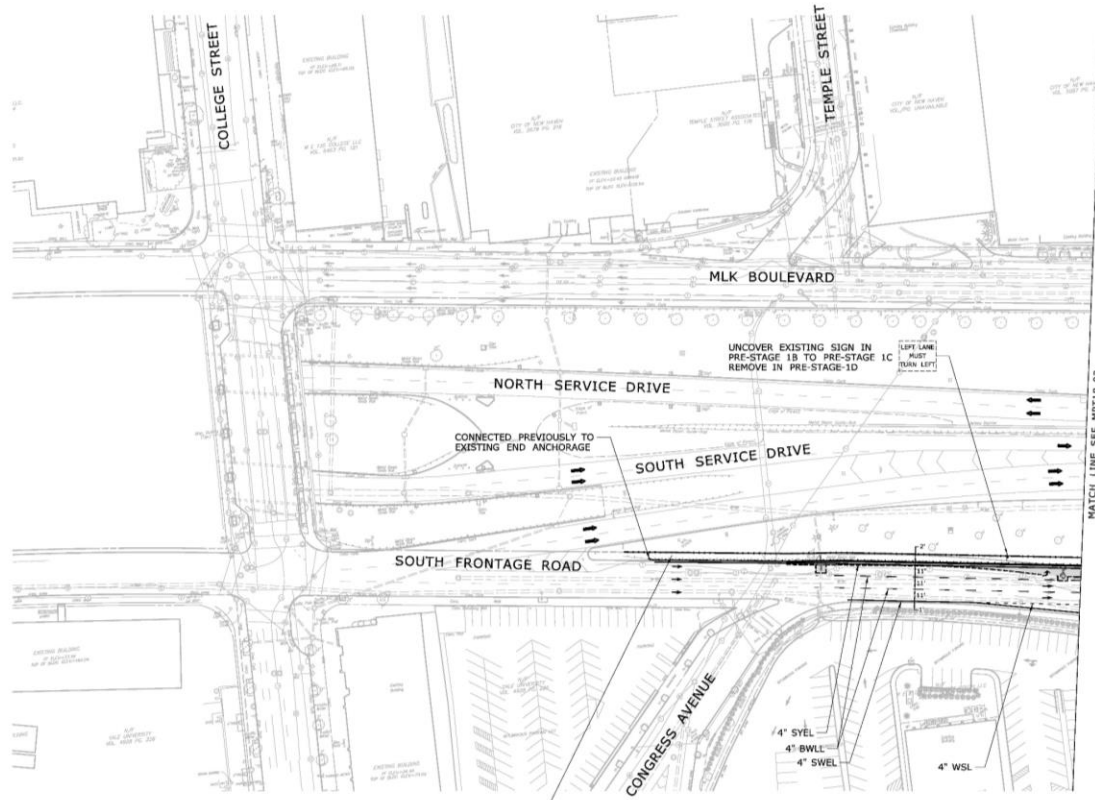
Duration: Approximately 25 weeks

SUGGESTED SEQUENCE OF CONSTRUCTION (PRE-STAGE 1B)

1. PERMANENT WIDENING ON SOUTH FRONTAGE ROAD OPEN TO TRAFFIC.

MAINTENANCE AND PROTECTION OF TRAFFIC PRE-STAGE 1B

SOUTH FRONTAGE ROAD WIDENING



- NOTES:
1. SEE DWG MPT-01 FOR LEGEND AND NOTES.
 2. SEE DWG MPT-02 FOR ADVANCE CONSTRUCTION SIGNING.

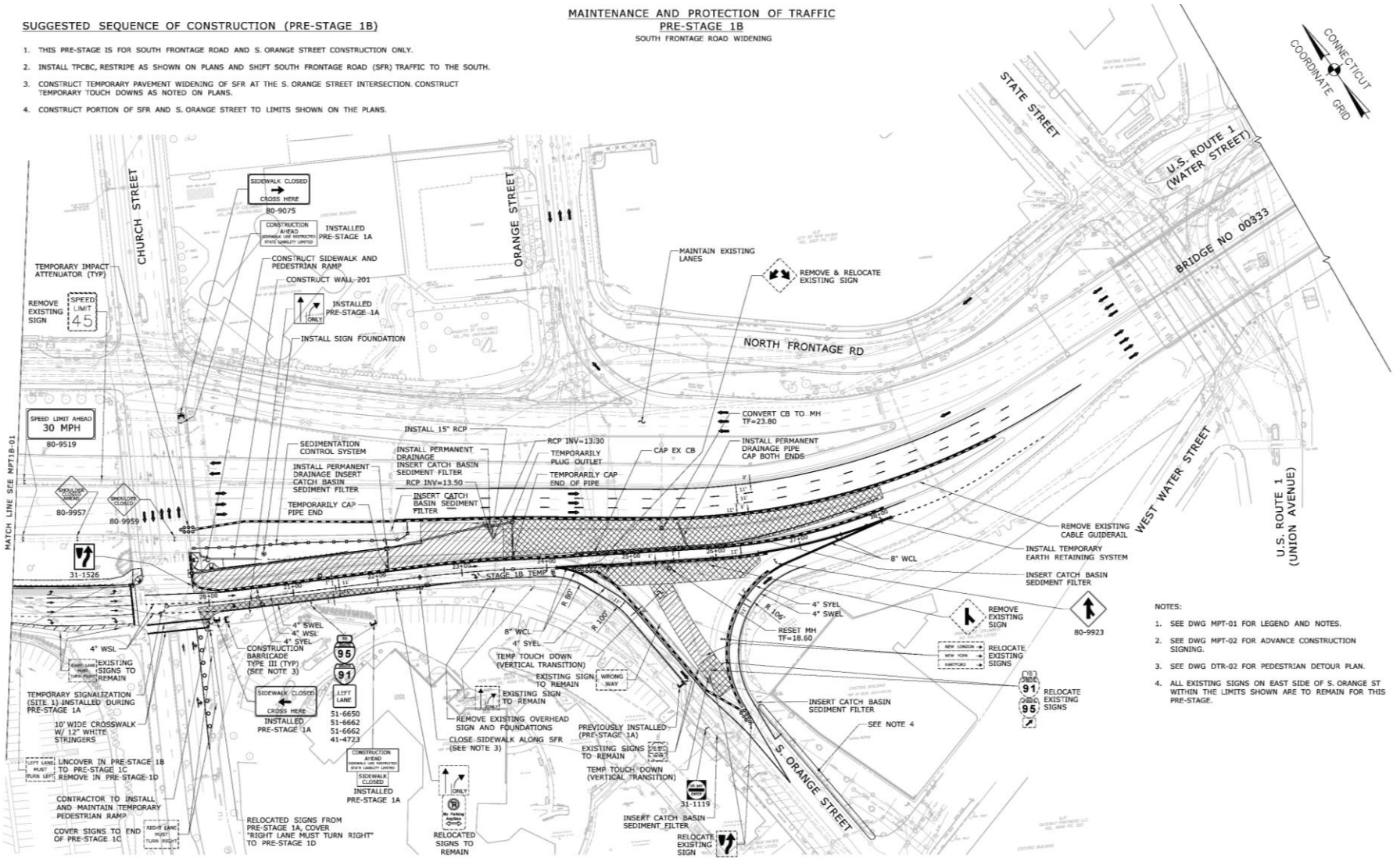
Construction Staging – Pre-Stage 1B

Duration: Approximately 25 weeks

MAINTENANCE AND PROTECTION OF TRAFFIC PRE-STAGE 1B SOUTH FRONTAGE ROAD WIDENING

SUGGESTED SEQUENCE OF CONSTRUCTION (PRE-STAGE 1B)

1. THIS PRE-STAGE IS FOR SOUTH FRONTAGE ROAD AND S. ORANGE STREET CONSTRUCTION ONLY.
2. INSTALL TPBC, RESTRIPE AS SHOWN ON PLANS AND SHIFT SOUTH FRONTAGE ROAD (SFR) TRAFFIC TO THE SOUTH.
3. CONSTRUCT TEMPORARY PAVEMENT WIDENING OF SFR AT THE S. ORANGE STREET INTERSECTION. CONSTRUCT TEMPORARY TOUCH DOWNS AS NOTED ON PLANS.
4. CONSTRUCT PORTION OF SFR AND S. ORANGE STREET TO LIMITS SHOWN ON THE PLANS.



- NOTES:
1. SEE DWG MPT-01 FOR LEGEND AND NOTES.
 2. SEE DWG MPT-02 FOR ADVANCE CONSTRUCTION SIGNING.
 3. SEE DWG DTR-02 FOR PEDESTRIAN DETOUR PLAN.
 4. ALL EXISTING SIGNS ON EAST SIDE OF S. ORANGE ST WITHIN THE LIMITS SHOWN ARE TO REMAIN FOR THIS PRE-STAGE.

Construction Staging – Pre-Stage 1C

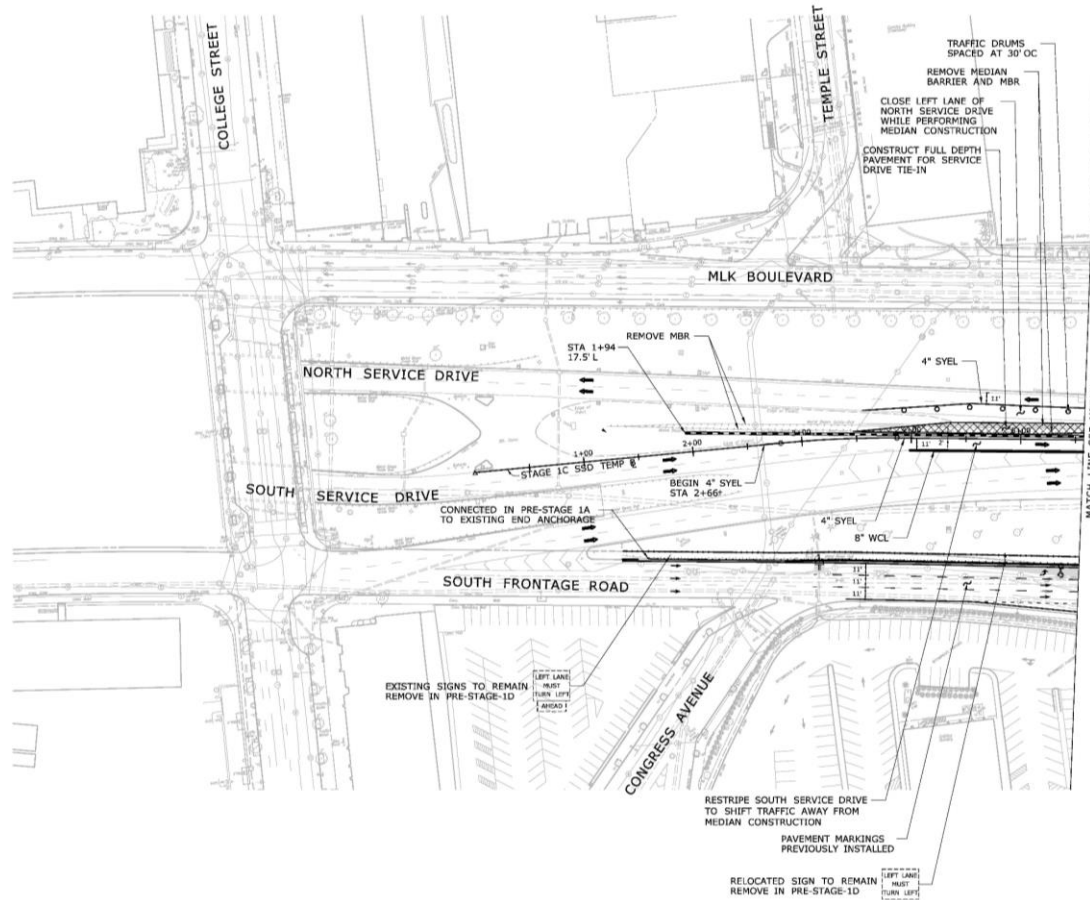
Duration: Approximately 6 weeks

SUGGESTED SEQUENCE OF CONSTRUCTION (PRE-STAGE 1C)

1. THIS PRE-STAGE IS FOR THE SERVICE DRIVE TIE-IN AND TEMPORARY SERVICE DRIVE RAMP CONSTRUCTION ONLY.
2. INSTALL TPCBC AS SHOWN ON THE PLANS, SHIFT TRAFFIC ON MARTIN LUTHER KING BLVD.

MAINTENANCE AND PROTECTION OF TRAFFIC PRE-STAGE 1C

SERVICE DRIVE TIE-IN CONSTRUCTION



- NOTES:
1. SEE DWG MPT-01 FOR LEGEND AND NOTES.
 2. SEE DWG MPT-02 FOR ADVANCE CONSTRUCTION SIGNING.

Construction Staging – Pre-Stage 1D

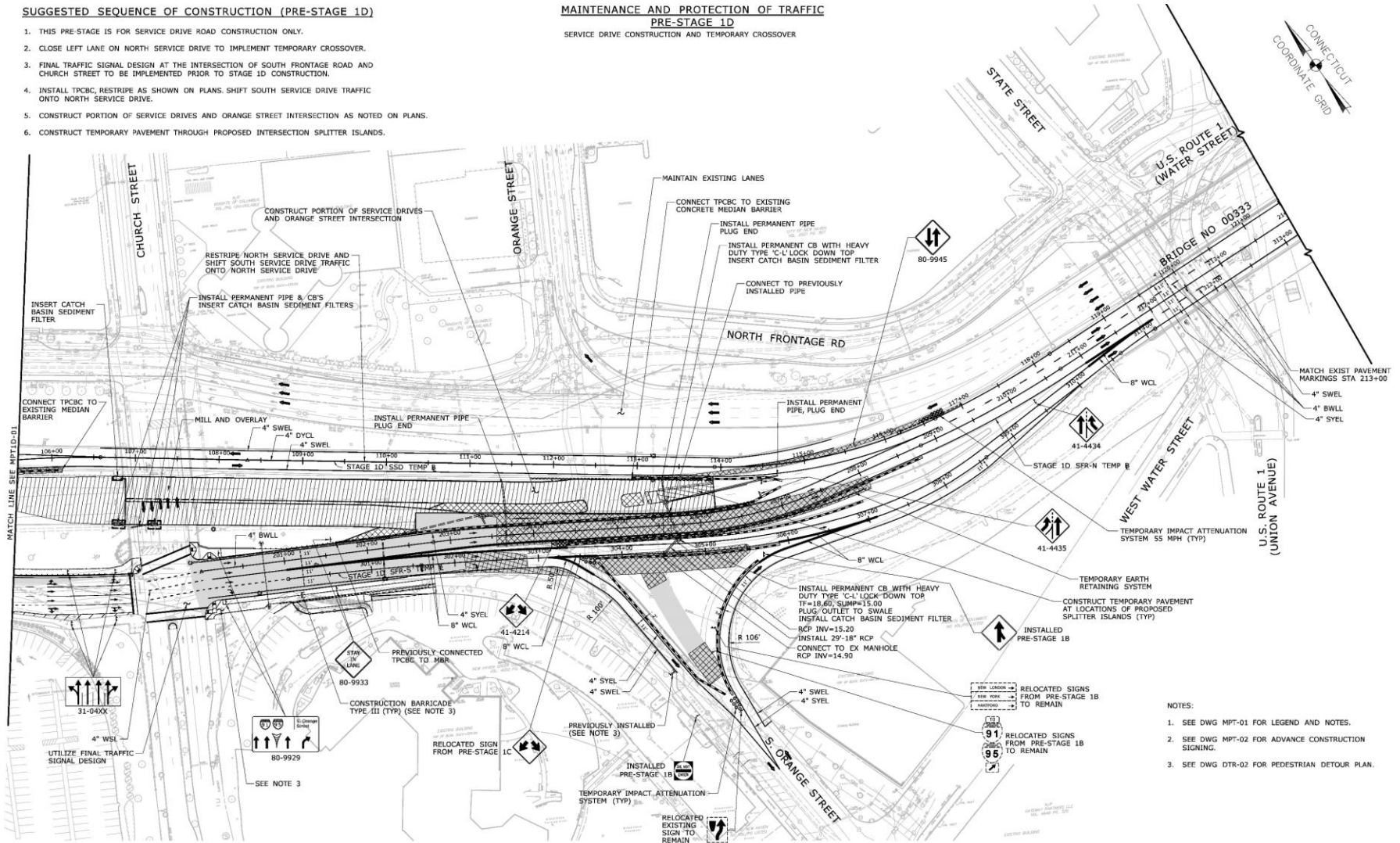
Duration: Approximately 4 weeks

SUGGESTED SEQUENCE OF CONSTRUCTION (PRE-STAGE 1D)

1. THIS PRE-STAGE IS FOR SERVICE DRIVE ROAD CONSTRUCTION ONLY.
2. CLOSE LEFT LANE ON NORTH SERVICE DRIVE TO IMPLEMENT TEMPORARY CROSSOVER.
3. FINAL TRAFFIC SIGNAL DESIGN AT THE INTERSECTION OF SOUTH FRONTAGE ROAD AND CHURCH STREET TO BE IMPLEMENTED PRIOR TO STAGE 1D CONSTRUCTION.
4. INSTALL TPCBC, RESTRIPE AS SHOWN ON PLANS. SHIFT SOUTH SERVICE DRIVE TRAFFIC ONTO NORTH SERVICE DRIVE.
5. CONSTRUCT PORTION OF SERVICE DRIVES AND ORANGE STREET INTERSECTION AS NOTED ON PLANS.
6. CONSTRUCT TEMPORARY PAVEMENT THROUGH PROPOSED INTERSECTION SPLITTER ISLANDS.

MAINTENANCE AND PROTECTION OF TRAFFIC PRE-STAGE 1D

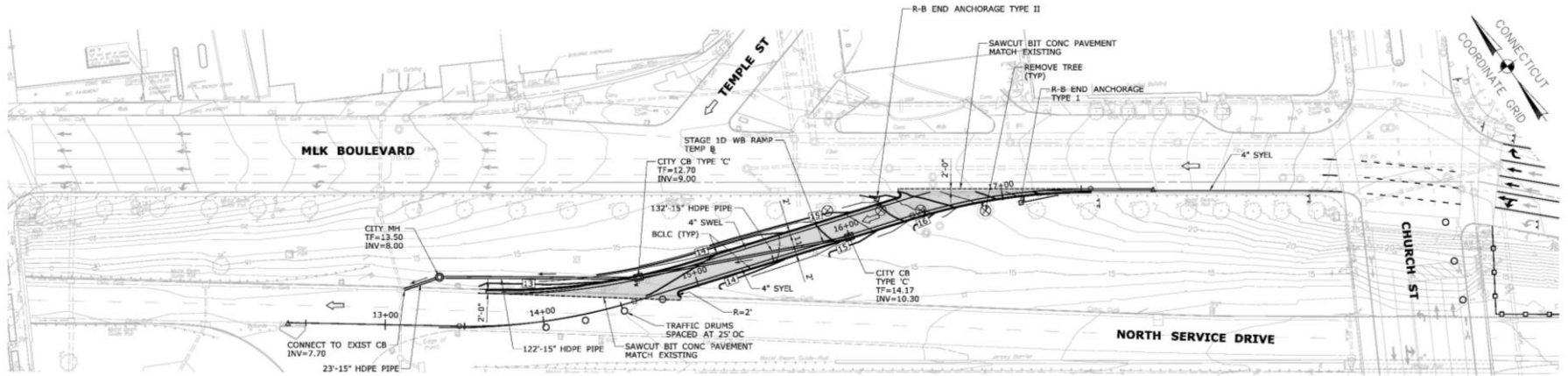
SERVICE DRIVE CONSTRUCTION AND TEMPORARY CROSSOVER



- NOTES:
1. SEE DWG MPT-01 FOR LEGEND AND NOTES.
 2. SEE DWG MPT-02 FOR ADVANCE CONSTRUCTION SIGNING.
 3. SEE DWG DTR-02 FOR PEDESTRIAN DETOUR PLAN.

Construction Staging – Pre-Stage 1D

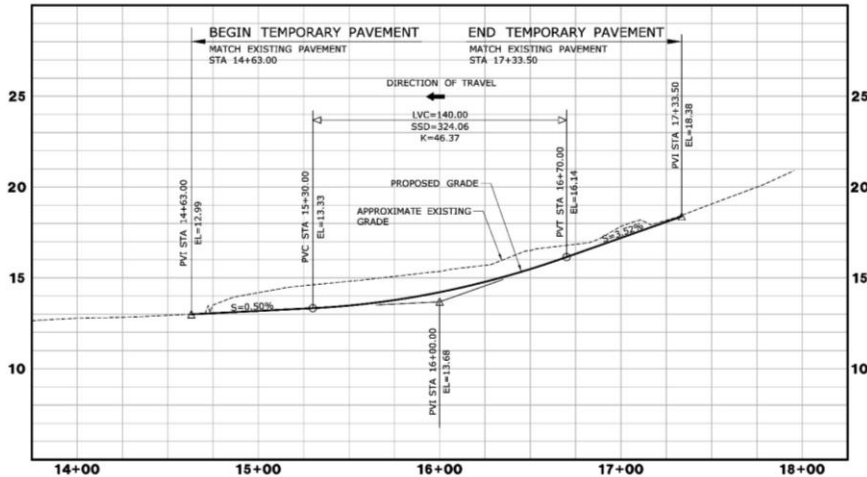
Duration: Approximately 4 weeks



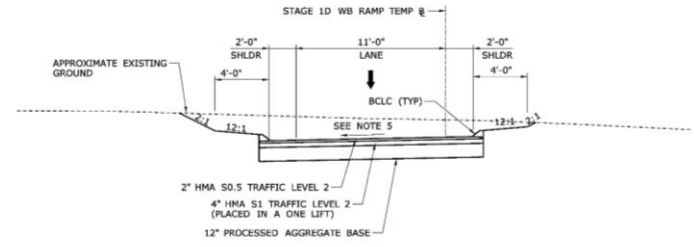
PLAN

LEGEND:

- EXISTING CONTOUR
- - - PROPOSED CONTOUR
- ⇨ DIRECTION OF TRAVEL
- TRAFFIC DRUM



PROFILE



TYPICAL RAMP SECTION
NOT TO SCALE

NOTES:

1. REFER TO DWG NO MTP-01 FOR MPT GENERAL NOTES.
2. REFER TO MPT PLANS FOR ADDITIONAL INFORMATION.
3. REMOVAL OF TREES TO BE PAID FOR UNDER "CLEARING AND GRUBBING".
4. REFER TO DWG NOS BLP-07 AND BLP-08 FOR BASELINE LAYOUT.
5. RAMP CROSS SLOPE VARIES, REFER TO PROPOSED CONTOURS.

Construction Staging – Pre-Stage 1E

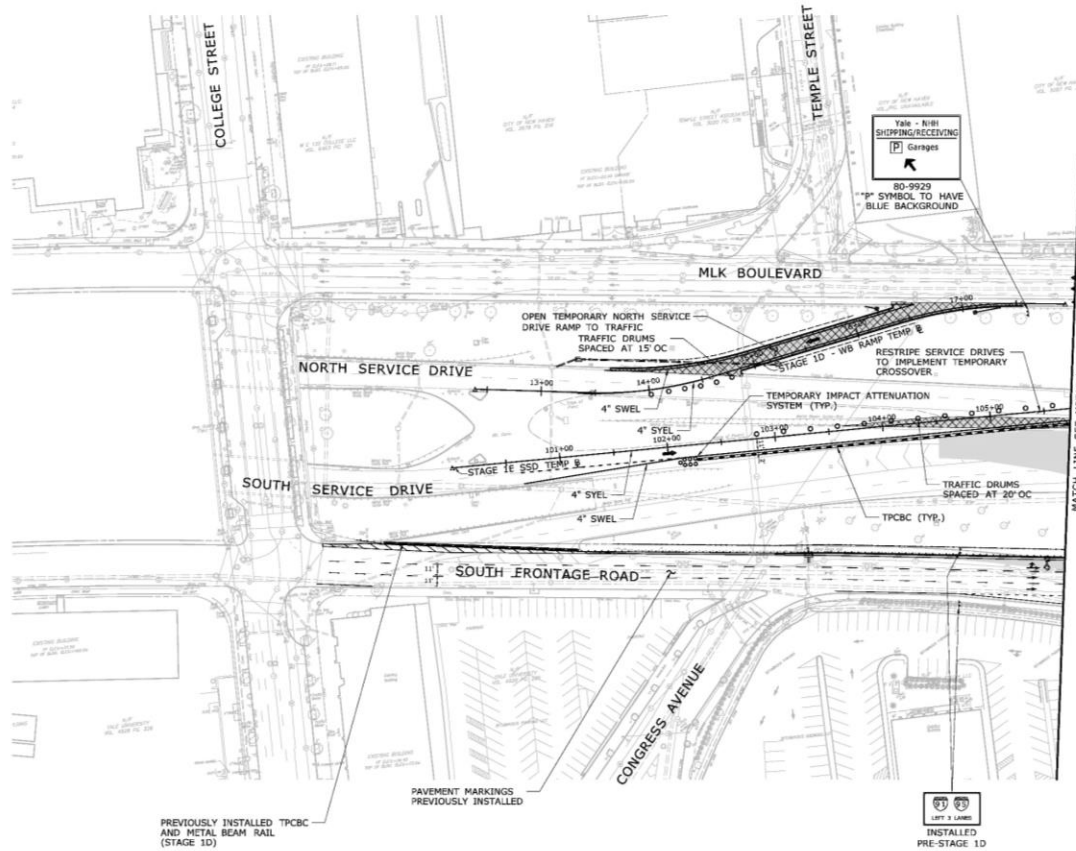
Duration: Approximately 2 weeks

SUGGESTED SEQUENCE OF CONSTRUCTION (PRE-STAGE 1E)

1. THIS PRE-STAGE 1E FOR ROUTE 34 EASTERN LIMITS OF CONSTRUCTION ONLY.
2. CLOSE NORTH SERVICE DRIVE RAMP.
3. OPEN TEMPORARY WB SERVICE DRIVE RAMP TO TRAFFIC.
4. RESTRIPE NORTH SERVICE DRIVE AND SHIFT EB TRAFFIC NORTH FROM STAGE 1D ON NORTH SERVICE DRIVE

MAINTENANCE AND PROTECTION OF TRAFFIC PRE-STAGE 1E

TEMPORARY SOUTH SERVICE DRIVE CROSSOVER



- NOTES:
1. SEE DWG MPT-01 FOR LEGEND AND NOTES.
 2. SEE DWG MPT-02 FOR ADVANCE CONSTRUCTION SIGNING.
 3. SEE DWG MPT1D-03 FOR TEMPORARY NORTH SERVICE DRIVE RAMP GRADING PLAN, PROFILE AND TYPICAL SECTION.

Construction Staging – Pre-Stage 1E

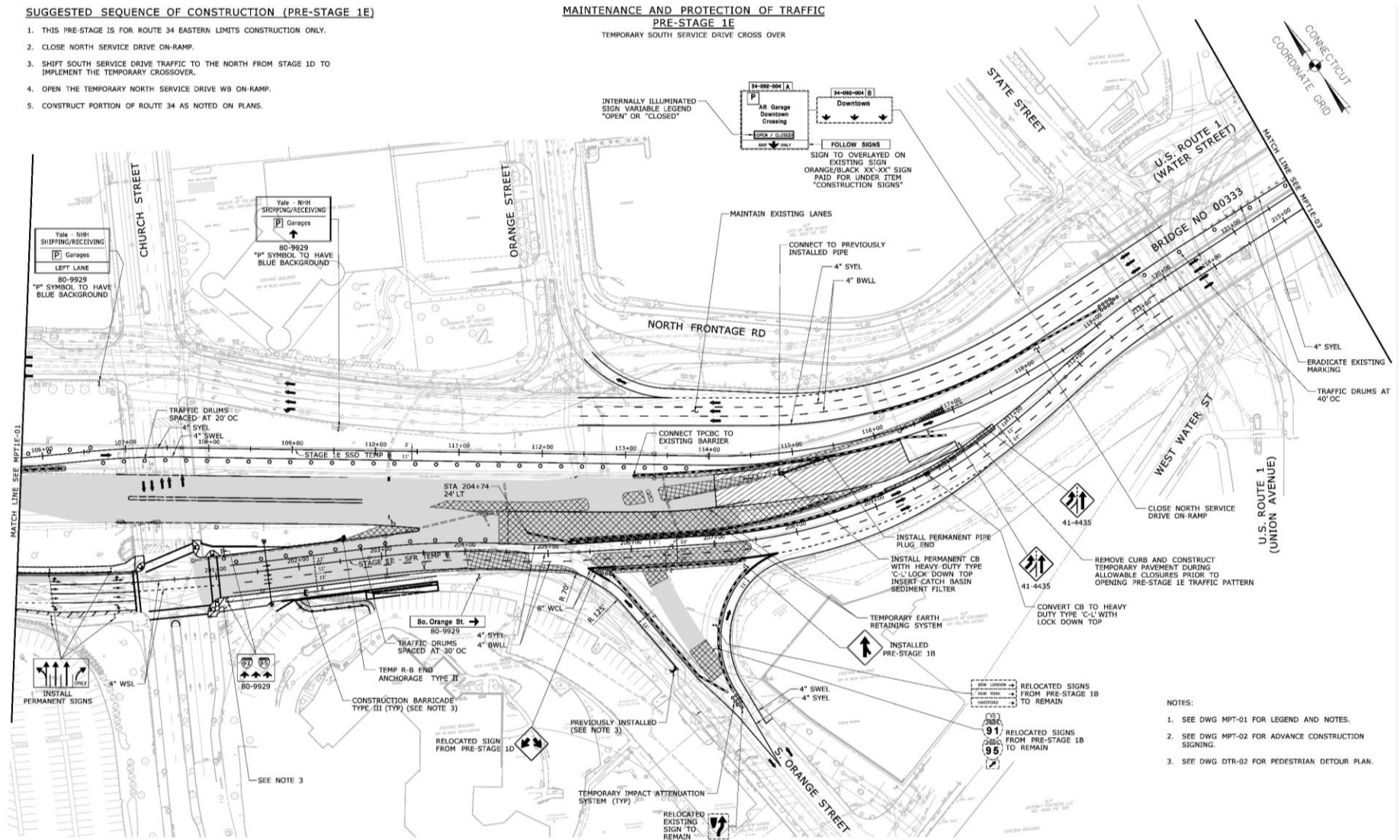
Duration: Approximately 2 weeks

SUGGESTED SEQUENCE OF CONSTRUCTION (PRE-STAGE 1E)

1. THIS PRE-STAGE 1E FOR ROUTE 34 EASTERN LIMITS CONSTRUCTION ONLY.
2. CLOSE NORTH SERVICE DRIVE ON-RAMP.
3. SHIFT SOUTH SERVICE DRIVE TRAFFIC TO THE NORTH FROM STAGE 1D TO IMPLEMENT THE TEMPORARY CROSSOVER.
4. OPEN THE TEMPORARY NORTH SERVICE DRIVE WB ON RAMP.
5. CONSTRUCT PORTION OF ROUTE 34 AS NOTED ON PLANS.

MAINTENANCE AND PROTECTION OF TRAFFIC PRE-STAGE 1E

TEMPORARY SOUTH SERVICE DRIVE CROSS OVER



- NOTES:
1. SEE DWG MPT-01 FOR LEGEND AND NOTES.
 2. SEE DWG MPT-02 FOR ADVANCE CONSTRUCTION SIGNING.
 3. SEE DWG DTR-02 FOR PEDESTRIAN DETOUR PLAN.

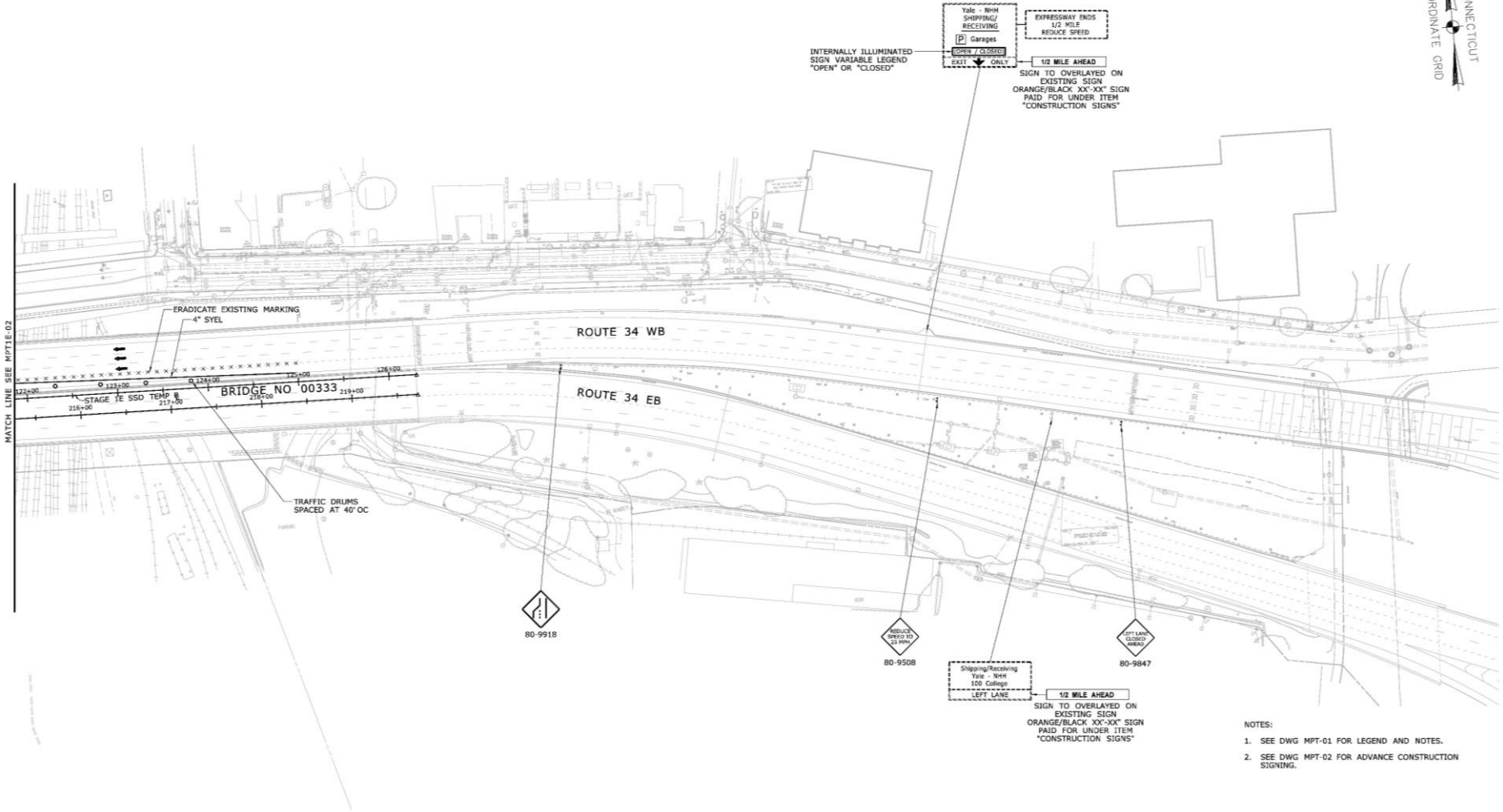
Construction Staging – Pre-Stage 1E

Duration: Approximately 2 weeks

SUGGESTED SEQUENCE OF CONSTRUCTION (PRE-STAGE 1E)

1. RESTRIPE AND INSTALL SIGNAGE AS SHOWN ON PLANS.

MAINTENANCE AND PROTECTION OF TRAFFIC PRE-STAGE 1E



- NOTES:
1. SEE DWG MPT-01 FOR LEGEND AND NOTES.
 2. SEE DWG MPT-02 FOR ADVANCE CONSTRUCTION SIGNING.

Construction Staging – Stage 1

Duration: Approximately 9 weeks

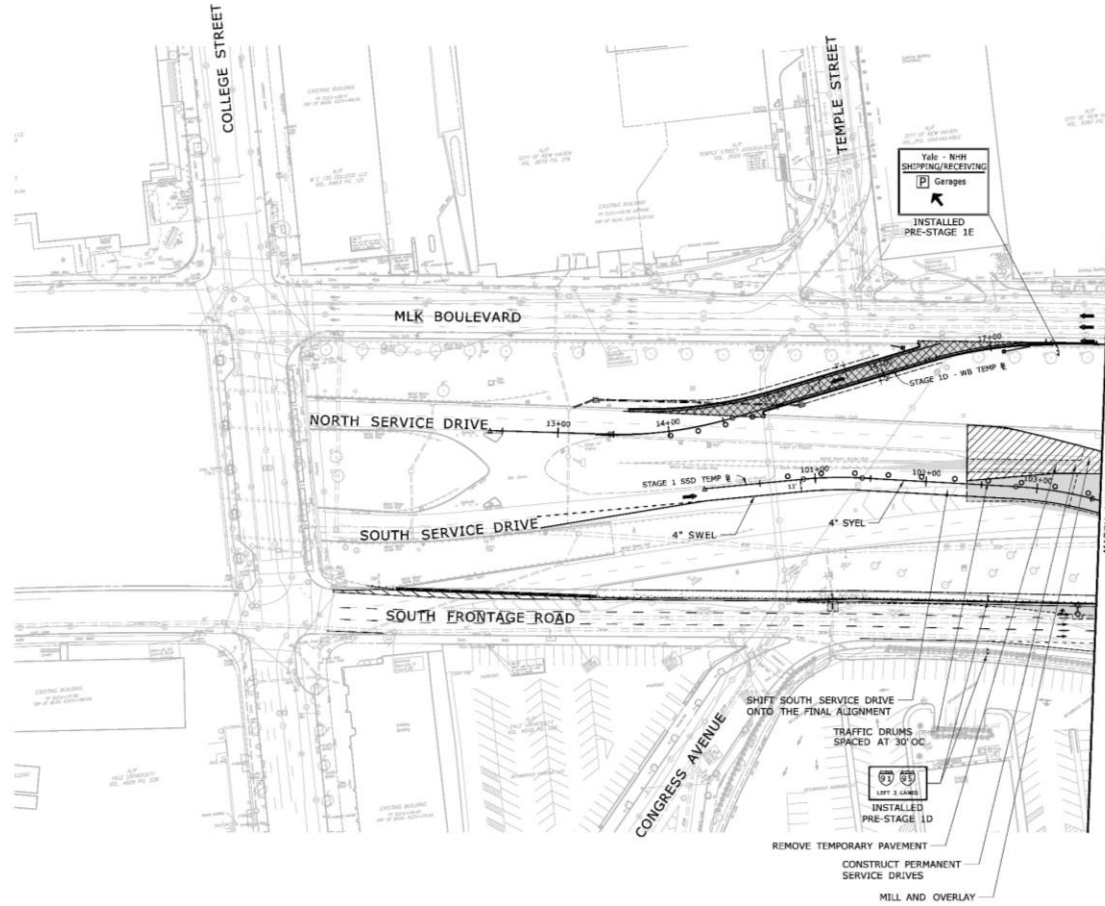


SUGGESTED SEQUENCE OF CONSTRUCTION (STAGE 1)

1. INSTALL TPBC AND BARRICADE, RESTRIPE AS SHOWN ON PLANS.
2. SHIFT NORTH SERVICE DRIVE TRAFFIC ONTO TEMPORARY SERVICE DRIVE RAMP.
3. SHIFT SOUTH SERVICE DRIVE TRAFFIC ONTO FINAL ALIGNMENT.
4. CLOSE EXISTING NORTH AND SOUTH SERVICE DRIVE RAMPS.

MAINTENANCE AND PROTECTION OF TRAFFIC STAGE 1

TEMPORARY NORTH SERVICE DRIVE RAMP OPENS TO TRAFFIC



- NOTES:
1. SEE DWG MPT-01 FOR LEGEND AND NOTES.
 2. SEE DWG MPT-02 FOR ADVANCE CONSTRUCTION SIGNING.

Construction Staging – Stage 1

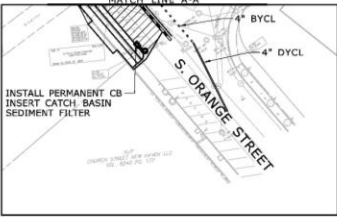
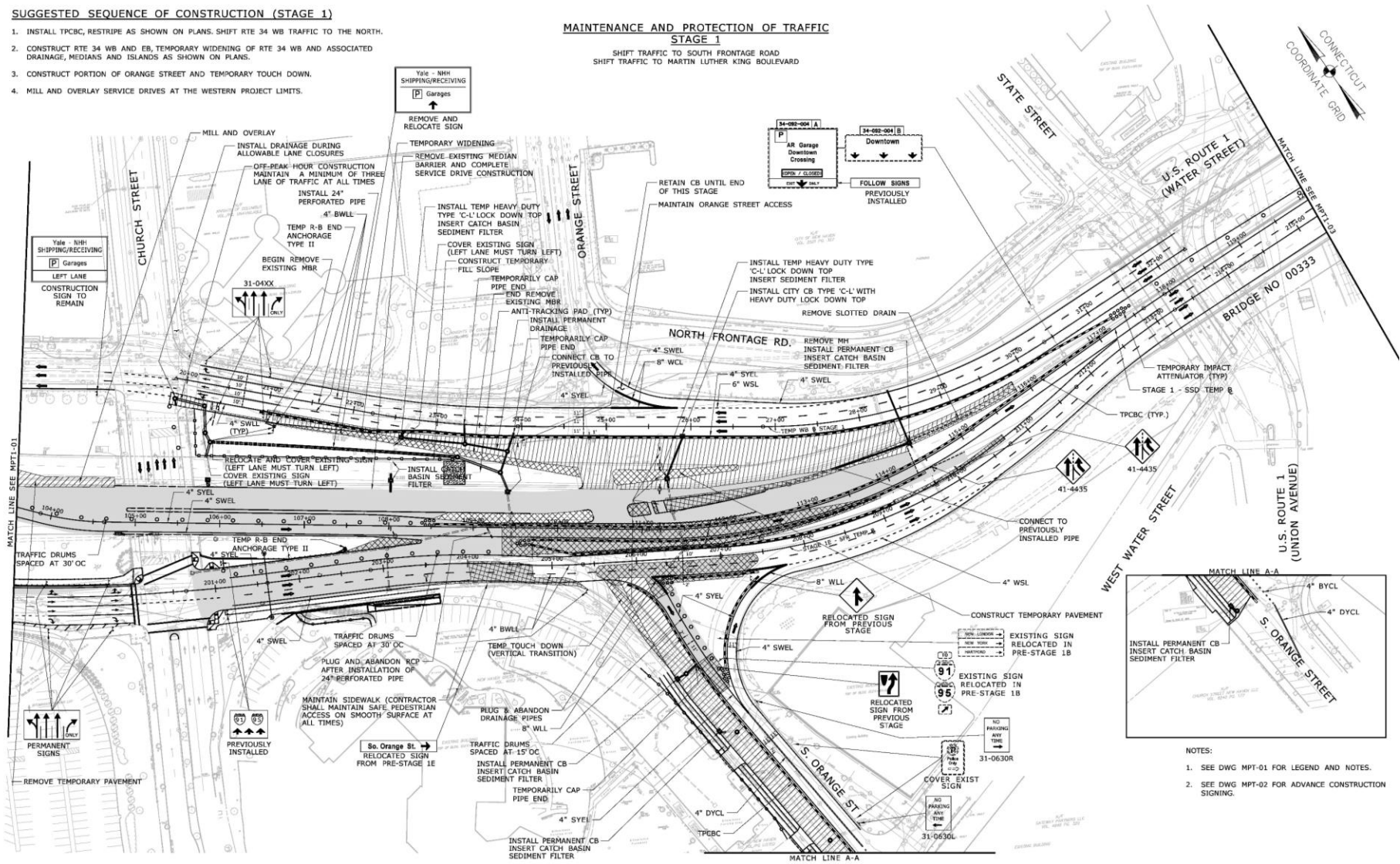
Duration: Approximately 9 weeks

SUGGESTED SEQUENCE OF CONSTRUCTION (STAGE 1)

1. INSTALL TPCBC, RESTRIPE AS SHOWN ON PLANS. SHIFT RTE 34 WB TRAFFIC TO THE NORTH.
2. CONSTRUCT RTE 34 WB AND EB, TEMPORARY WIDENING OF RTE 34 WB AND ASSOCIATED DRAINAGE, MEDIANS AND ISLANDS AS SHOWN ON PLANS.
3. CONSTRUCT PORTION OF ORANGE STREET AND TEMPORARY TOUCH DOWN.
4. MILL AND OVERLAY SERVICE DRIVES AT THE WESTERN PROJECT LIMITS.

MAINTENANCE AND PROTECTION OF TRAFFIC STAGE 1

SHIFT TRAFFIC TO SOUTH FRONTAGE ROAD
SHIFT TRAFFIC TO MARTIN LUTHER KING BOULEVARD



- NOTES:
1. SEE DWG MPT-01 FOR LEGEND AND NOTES.
 2. SEE DWG MPT-02 FOR ADVANCE CONSTRUCTION SIGNING.

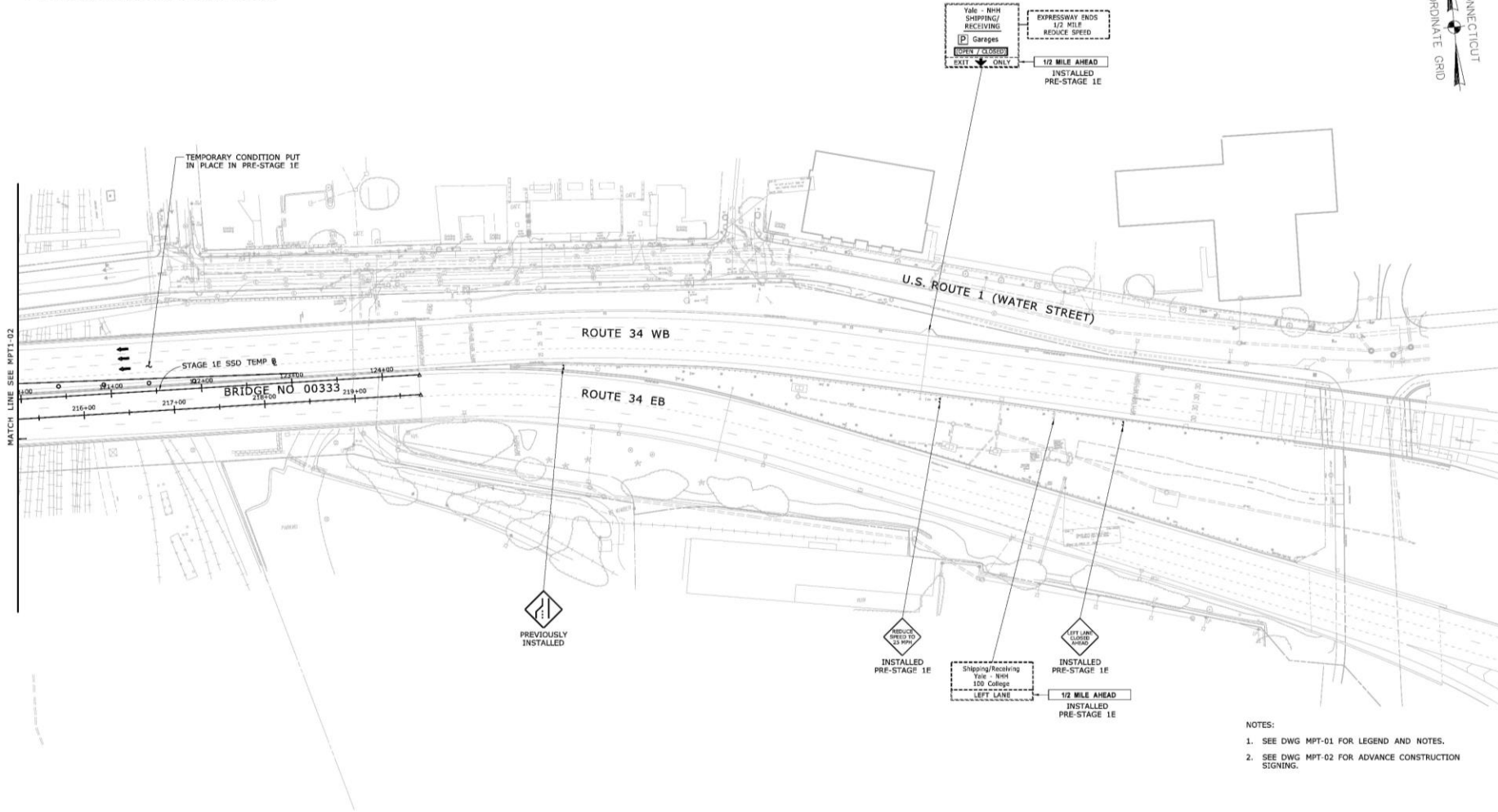
Construction Staging – Stage 1

Duration: Approximately 9 weeks

SUGGESTED SEQUENCE OF CONSTRUCTION (STAGE 1)

1. RESTRIPE AND INSTALL SIGNAGE AS SHOWN ON PLANS.

MAINTENANCE AND PROTECTION OF TRAFFIC STAGE 1



- NOTES:
1. SEE DWG MPT-01 FOR LEGEND AND NOTES.
 2. SEE DWG MPT-02 FOR ADVANCE CONSTRUCTION SIGNING.

CONNECTICUT
COORDINATE GRID

Construction Staging – Stage 2

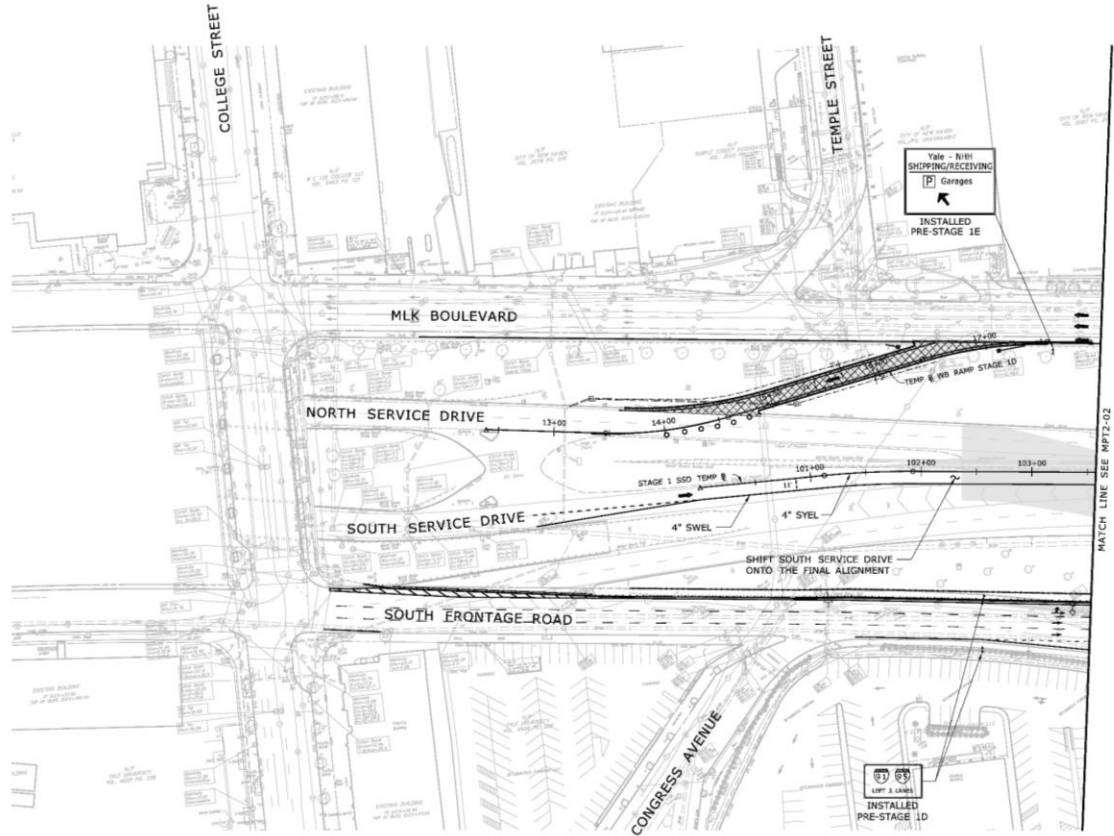
Duration: Approximately 28 weeks

SUGGESTED SEQUENCE OF CONSTRUCTION (STAGE 2)

1. MAINTAIN TEMPORARY WB SERVICE DRIVE RAMP OPEN TO TRAFFIC.
2. INSTALL TPCBC AND BARRICADE, RESTRIPE AS SHOWN ON PLANS.
3. SHIFT SOUTH SERVICE DRIVE TRAFFIC NORTH.
4. SHIFT 2 LANES OF SOUTH FRONTAGE ROAD TRAFFIC TO THE NORTH.
5. CONSTRUCT SOUTH PORTIONS OF ORANGE STREET INTERSECTION AS SHOWN ON THE PLANS.

MAINTENANCE AND PROTECTION OF TRAFFIC STAGE 2

ONE LANE OF SOUTH SERVICE DRIVE TRAFFIC SHIFTED TO THE NORTH
SHIFT TWO LANES OF SOUTH FRONTAGE ROAD TRAFFIC TO THE NORTH
SHIFT TRAFFIC TO NEW MARTIN LUTHER KING BLVD



- NOTES:
1. SEE DWG MPT-01 FOR LEGEND AND NOTES.
 2. SEE DWG MPT-02 FOR ADVANCE CONSTRUCTION SIGNING.

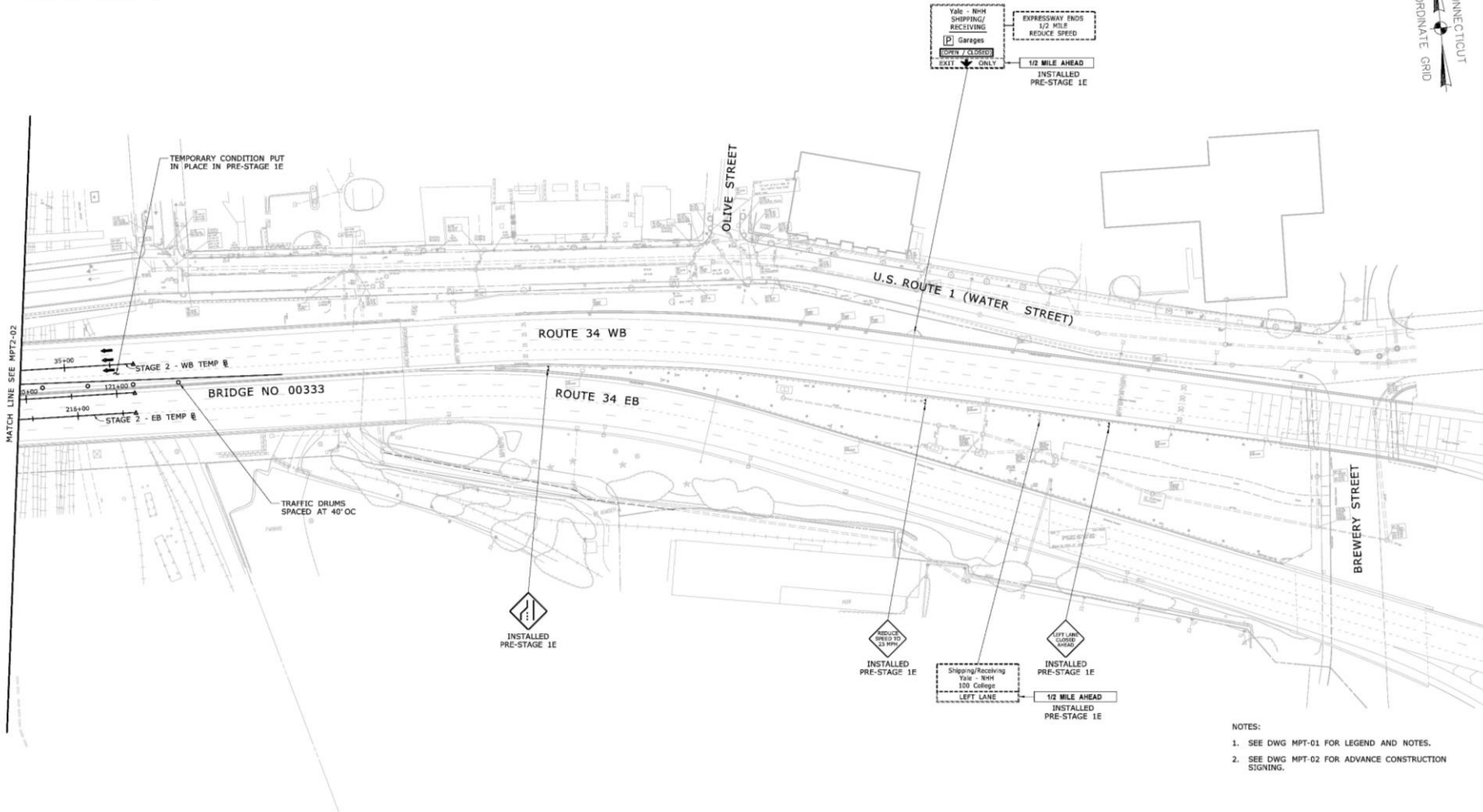
Construction Staging – Stage 2

Duration: Approximately 28 weeks

SUGGESTED SEQUENCE OF CONSTRUCTION (STAGE 2)

1. RESTRIPE AS SHOWN ON PLANS.

MAINTENANCE AND PROTECTION OF TRAFFIC STAGE 2



- NOTES:
1. SEE DWG MPT-01 FOR LEGEND AND NOTES.
 2. SEE DWG MPT-02 FOR ADVANCE CONSTRUCTION SIGNING.

Construction Staging – Stage 2A

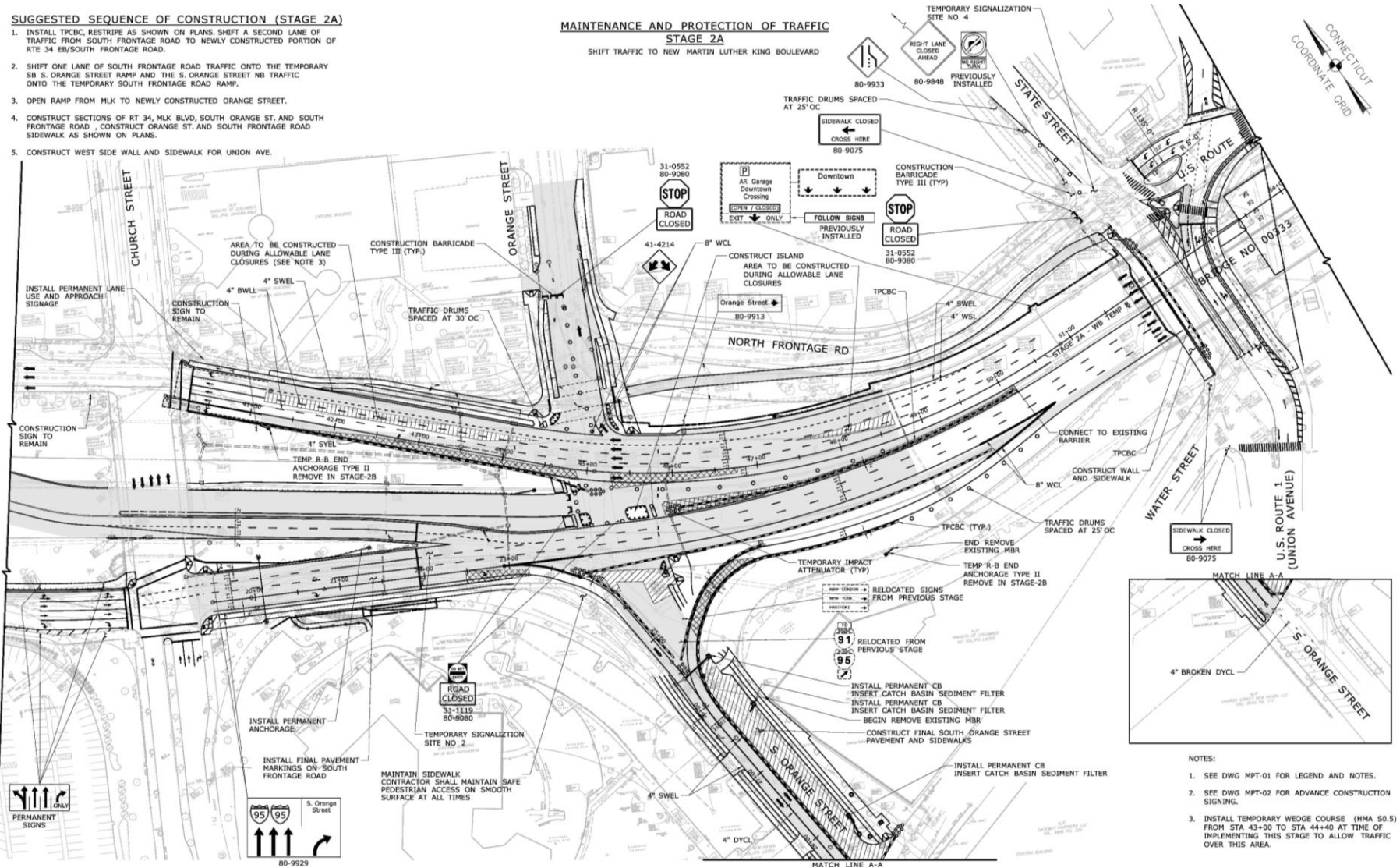
Duration: Approximately 5 weeks

SUGGESTED SEQUENCE OF CONSTRUCTION (STAGE 2A)

1. INSTALL TPBC, RESTRIPE AS SHOWN ON PLANS. SHIFT A SECOND LANE OF TRAFFIC FROM SOUTH FRONTAGE ROAD TO NEWLY CONSTRUCTED PORTION OF RTE 34 EB/SOUTH FRONTAGE ROAD.
2. SHIFT ONE LANE OF SOUTH FRONTAGE ROAD TRAFFIC ONTO THE TEMPORARY SB S. ORANGE STREET RAMP AND THE S. ORANGE STREET NB TRAFFIC ONTO THE TEMPORARY SOUTH FRONTAGE ROAD RAMP.
3. OPEN RAMP FROM MLK TO NEWLY CONSTRUCTED ORANGE STREET.
4. CONSTRUCT SECTIONS OF RT 34, MLK BLVD, SOUTH ORANGE ST. AND SOUTH FRONTAGE ROAD, CONSTRUCT ORANGE ST. AND SOUTH FRONTAGE ROAD SIDEWALK AS SHOWN ON PLANS.
5. CONSTRUCT WEST SIDE WALL AND SIDEWALK FOR UNION AVE.

MAINTENANCE AND PROTECTION OF TRAFFIC STAGE 2A

SHIFT TRAFFIC TO NEW MARTIN LUTHER KING BOULEVARD



- NOTES:
1. SEE DWG MPT-01 FOR LEGEND AND NOTES.
 2. SEE DWG MPT-02 FOR ADVANCE CONSTRUCTION SIGNALING.
 3. INSTALL TEMPORARY WEDGE COURSE (HMA S0.5) FROM STA 43+00 TO STA 44+40 AT TIME OF IMPLEMENTING THIS STAGE TO ALLOW TRAFFIC OVER THIS AREA.

Construction Staging – Stage 2B

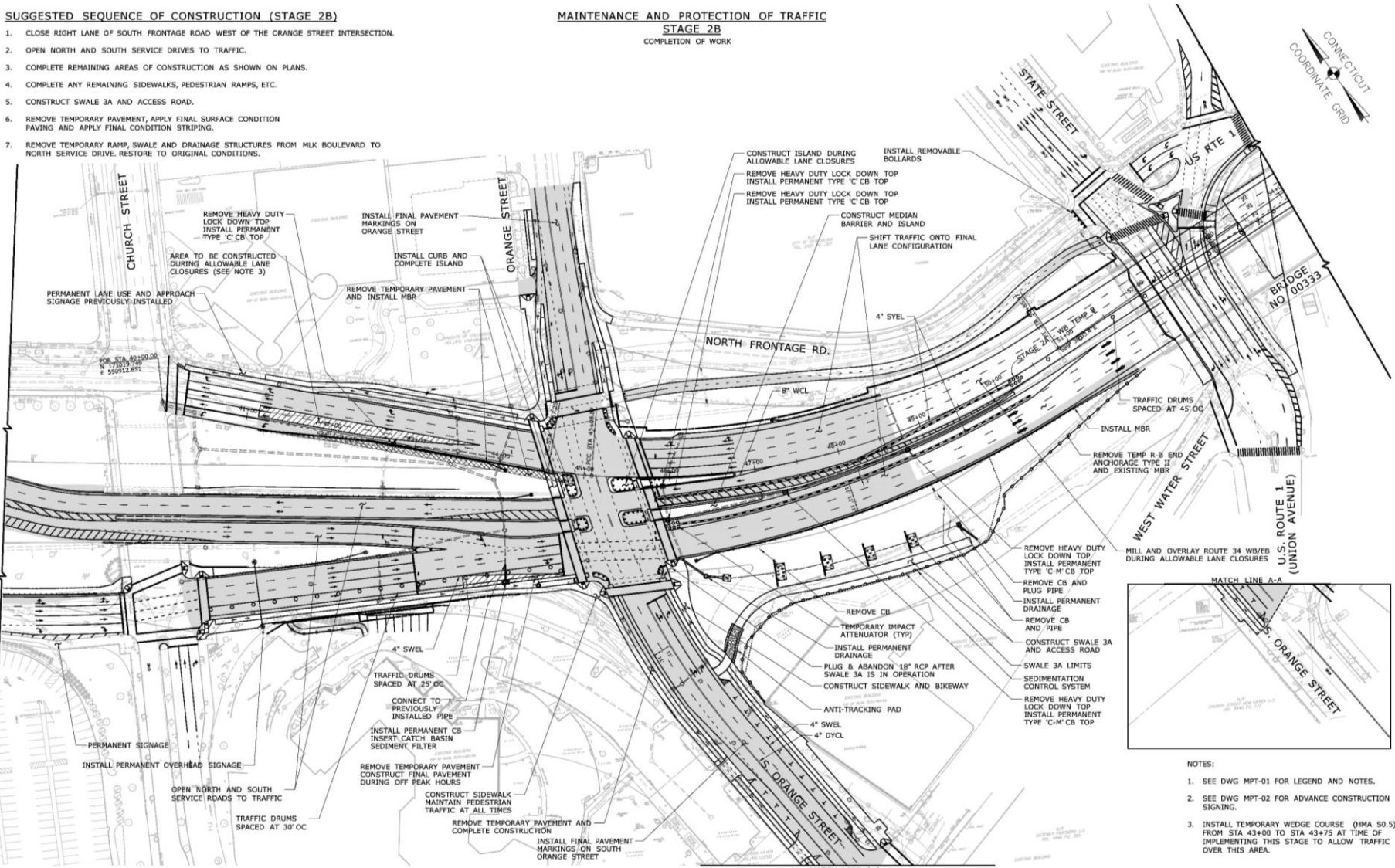
Duration: Approximately 14 weeks

SUGGESTED SEQUENCE OF CONSTRUCTION (STAGE 2B)

1. CLOSE RIGHT LANE OF SOUTH FRONTAGE ROAD WEST OF THE ORANGE STREET INTERSECTION.
2. OPEN NORTH AND SOUTH SERVICE DRIVES TO TRAFFIC.
3. COMPLETE REMAINING AREAS OF CONSTRUCTION AS SHOWN ON PLANS.
4. COMPLETE ANY REMAINING SIDEWALKS, PEDESTRIAN RAMP, ETC.
5. CONSTRUCT SWALE 3A AND ACCESS ROAD.
6. REMOVE TEMPORARY PAVEMENT, APPLY FINAL SURFACE CONDITION PAVING AND APPLY FINAL CONDITION STRIPING.
7. REMOVE TEMPORARY RAMP, SWALE AND DRAINAGE STRUCTURES FROM MLK BOULEVARD TO NORTH SERVICE DRIVE. RESTORE TO ORIGINAL CONDITIONS.

MAINTENANCE AND PROTECTION OF TRAFFIC

STAGE 2B
COMPLETION OF WORK



- NOTES:
1. SEE DWG MPT-01 FOR LEGEND AND NOTES.
 2. SEE DWG MPT-02 FOR ADVANCE CONSTRUCTION SIGNING.
 3. INSTALL TEMPORARY WEDGE COURSE (HMA S0.5) FROM STA 43+00 TO STA 43+75 AT TIME OF IMPLEMENTING THIS STAGE TO ALLOW TRAFFIC OVER THIS AREA.